

# tekmar® Quick Setup Guide

## tekmarNet®4 Thermostat 540



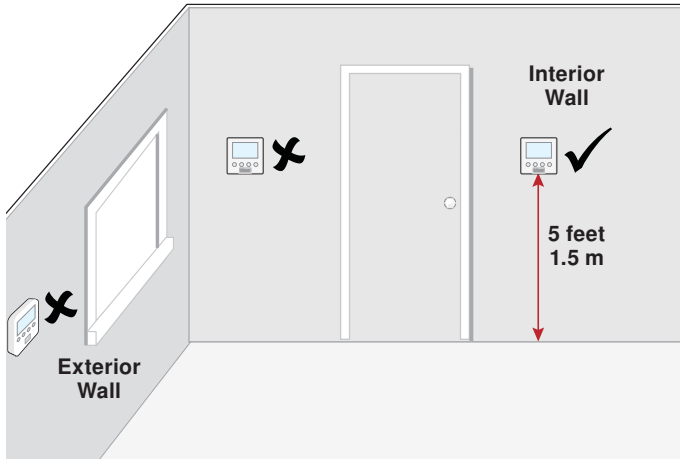
Zoning

**Q540**

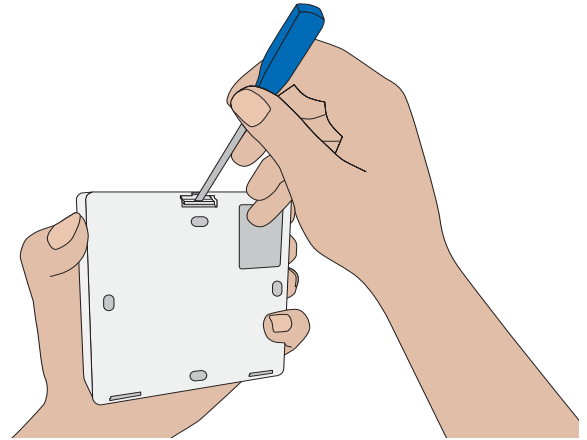
12/11

Replaces: 08/10

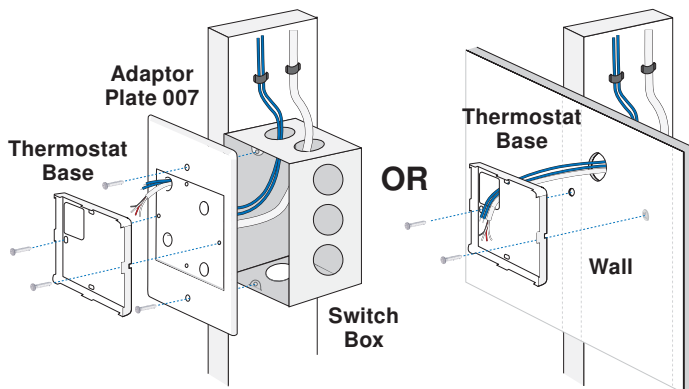
### 1. Location



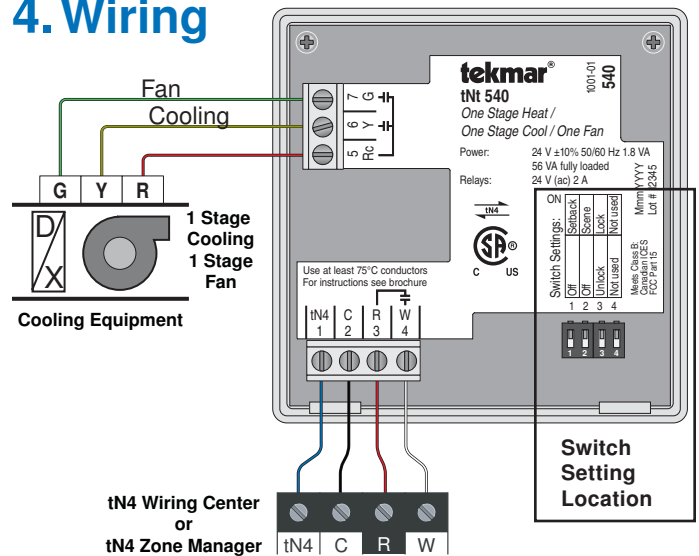
### 2. Remove Mounting Base



### 3. Install Mounting Base



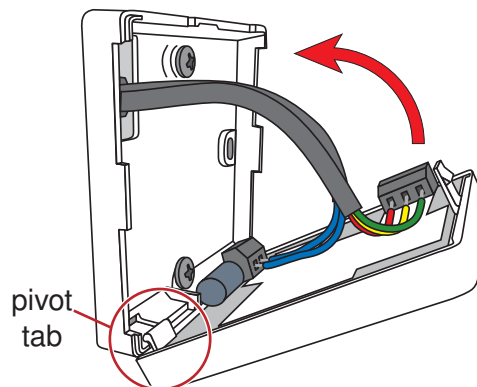
### 4. Wiring



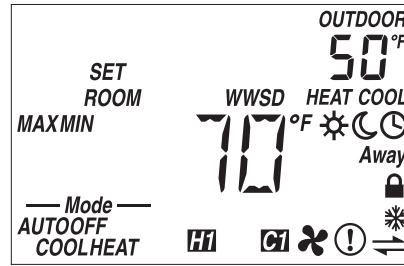
### 5. Switch Settings

Switch	Position	Action
1	ON	<b>SETBACK</b> Allow thermostat to respond to available schedule. Requires Timer 033.
	OFF	<b>OFF</b> No setback schedule response.
2	ON	<b>SCENE</b> Allow thermostat to respond to scenes. Requires User Switch 479.
	OFF	<b>OFF</b> No scene response.
3	ON	<b>LOCK</b> Locked to 'User' access level. Set to Lock when installation completed.
	OFF	<b>UNLOCK</b> Unlock to access all settings. Set to Unlock during installation.
4	ON	Not used
	OFF	Not used

### 6. Close Thermostat



## 7. User Interface



## 8. Critical Settings

The following settings are essential to the successful operation of the system.

**Important Note:** Set switch setting #3 and tekmarNet® system control to Unlock to change Access level to Installer. Return to Lock setting once installation has been completed.

Press

Together

- Press and hold down both the **▲** and **▼** buttons for 2 seconds to change from one step to the next.
- Release both buttons once the step has been reached.
- Press the **▲** or the **▼** button to change the setting, if available.
- Press and hold down both the **▲** and **▼** buttons for 2 seconds to go to the next step, OR
- After 10 seconds of no button activity, the display goes back to normal operation.

Display	Range	Access	Description	Set to
	°F or °C Default = °F	Installer User	<b>TEMPERATURE UNITS</b> Press the <b>▲</b> or the <b>▼</b> button to change from °F to °C and vice versa.	
	0, 1, 2, 3 Default = 1	Installer	<b>FAN MODE</b> Select how the fan should operate together with heating and cooling. 0 = Manual operation only 1 = Operate fan with cooling only 2 = Operate fan with heating and cooling 3 = Operate fan with heating only	
	Hyd (Hydronic) or Oth (Other) Default = Hydronic	Installer	<b>HEATING TERMINAL TYPE</b> Select if the heating for this zone is hydronic or non-hydronic (other). Available when: • A reset control is present on the tekmarNet® system.	
	OFF or On Default = On	Installer	<b>HEAT SUPPLY PUMP</b> During heating, select whether or not the system supply pump should turn on or be off to allow a zone group pump per manifold. Available when: • A reset control is present on the tekmarNet® system AND Heating terminal type is set to Hydronic.	

For a full list of settings and operational details, please refer to the thermostat **Installation and Operation Manual (D540)** included with compatible tekmarNet® controls or download the brochure from [www.tekmarcontrols.com](http://www.tekmarcontrols.com)