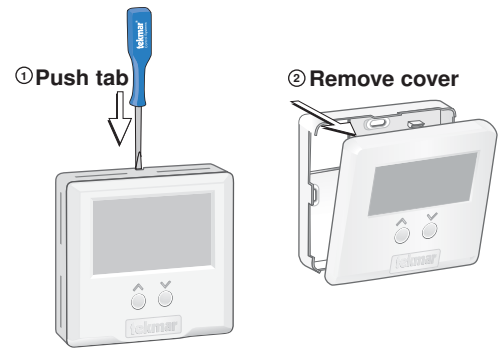


This Quick Setup Guide contains all information required to get your new tekmarNet®2 thermostat installed and operational. An Installation and Operation Manual containing all available features and operational details is included with compatible tekmarNet® controls or download the brochure from www.tekmarcontrols.com/literature/d.html.

Basic Installation

Remove the wiring cover

1. Place a small slot screwdriver or similar tool into the slot located on the top of the thermostat.
2. While pushing down against the plastic tab, pull the top of the front cover so that it pivots around the bottom edge of the thermostat's base.



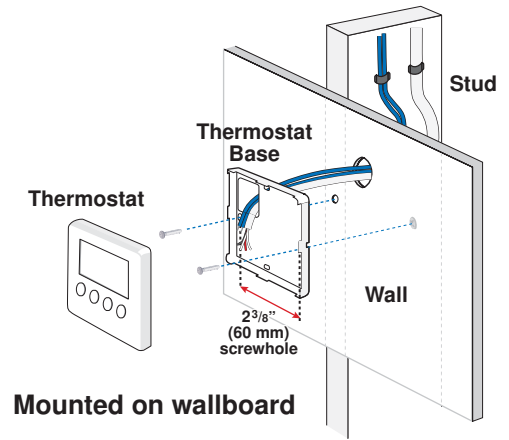
Mount the Thermostat Base

When choosing thermostat location, consider the following:

- Mount only on an interior wall
- No draft, direct sun or sources of excess heat or cool air
- Approximately 5 ft. (1.5 m) off of finished floor

1. Feed wiring through the opening in the back of the thermostat.
2. Use screws to fasten the back plate of the thermostat to the wall. At least one of the screws should enter a wall stud or similar rigid material. Use drywall anchors if necessary.

The thermostat can also be mounted to a single gang switch box using an Adapter Plate 007.



Wiring

This diagram shows typical wiring to a Thermostat 527. Use standard 18 AWG wire for all thermostat connections. Follow local wiring codes and guidelines for low voltage wiring.

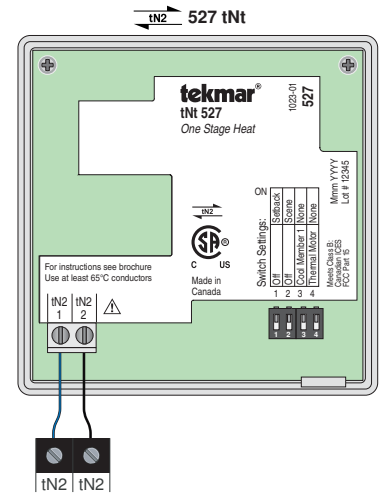
1. Wire the two tN2 wires from the tN2 system control or Wiring Center to terminals 1 and 2. Polarity does not matter for tN2 connections.

For wiring details and testing procedure, please refer to the D527 Installation and Operation manual included with the tN2 House Control, Zone Manager or Wiring Center.

Replace Thermostat Cover

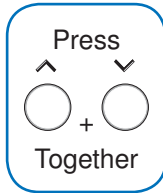
1. Replace cover by placing bottom tabs against base with cover at a 45 degree angle. Hinge cover upwards and snap into place. Make sure wires do not get pinched.

Note: In rare cases, when a tN2 Thermostat is turned on for the first time, a Device LIM warning may appear on the screen. After a few minutes the message will clear and the thermostats will resume normal operation.



Basic Settings

To change settings other than the current temperature, use the following steps:



- Press and hold down both the \wedge and \vee buttons to advance through steps. While holding both buttons down, a new setting will display every 5 seconds.
- Release both buttons once the step has been reached.
- Press the \wedge or the \vee button to change the setting, if available.
- Press and hold down both the \wedge and \vee buttons for 5 seconds to go to the next step,
- After 10 seconds without button activity, the display goes back to normal operation.

Display		Description								
	STEP 1 Change the Non-current Temperature	After pressing the \wedge and \vee buttons together, the non-current temperature setting will show on the display. Press the \wedge or \vee button to change the non-current temperature. <table border="1"> <thead> <tr> <th>Current Temperature</th> <th>Non-current Temperature</th> </tr> </thead> <tbody> <tr> <td></td> <td></td> </tr> <tr> <td></td> <td></td> </tr> <tr> <td>Away</td> <td></td> </tr> </tbody> </table>	Current Temperature	Non-current Temperature					Away	
Current Temperature	Non-current Temperature									
Away										
	STEP 2 °F or °C	Press the \wedge or the \vee button to change from °F to °C and vice versa.								
	STEP 3 Backlight Off, 30 sec, On	Press the \wedge or the \vee button to select the backlight to permanent Off, 30 second temporary on, or permanent.								
	STEP 4 Auto cycle or Synchronization	Press the \wedge or the \vee button to select between Auto cycles or Synchronization. Available when: <ul style="list-style-type: none"> • There is no tekmarNet® System Control on the system. 								
	STEP 5 View Type and Software Version	The large number shows the type number as 527. The software version is shown in the upper right hand corner.								

This is a basic list of common settings for this thermostat. For a full list of settings and operational details, please refer to the thermostat **Installation and Operation Manual (D527)** included with compatible tekmarNet® controls or download the brochure from www.tekmarcontrols.com/literature/d.html.